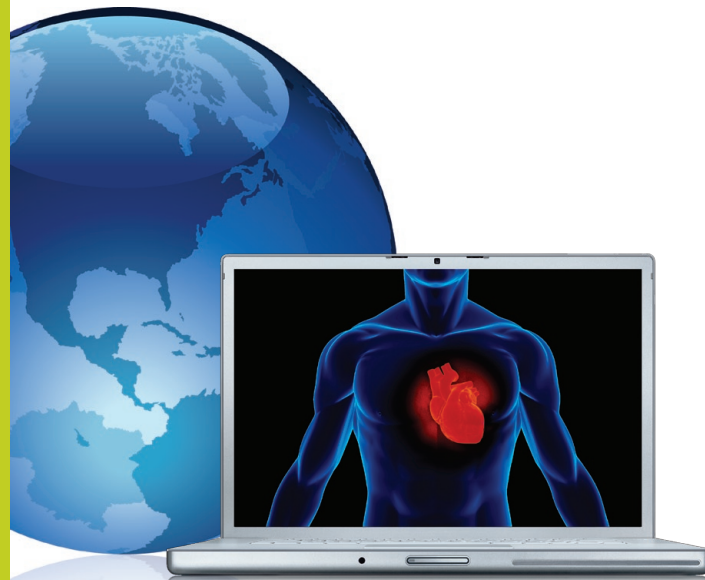


Introducing Cardiostream

Access patient data. anytime. anywhere.



cardiostream

ANYWHERE YOU NEED TO READ

Cardiostream is an advanced web-based multi-modality image management system that was designed specifically to meet the needs of Digirad Imaging Solutions' [DIS] cardiovascular ultrasound and nuclear cardiology customers. This product was developed in partnership with Cardiostream Inc; an Atlanta based company with extensive experience in web-based and mini-PACS solutions. Cardiostream allows digital online access for patient data, clinical images, professional reports and seamless clinical review process. When needed, offers the flexibility of offline access where internet access is not available.

By using standard DICOM interface Cardiostream provides the interpreting physicians diagnostic interpretation capability using static and full motion snapshots of raw and processed images. The embedded viewer allows the user to toggle between two screen sizes or change to a full screen mode.

DIGIRAD
IMAGING SOLUTIONS®

Cardiostream integrates an online report generation tool. This automated program provides point and click selection on a menu of preloaded observations or diagnostic statements that adhere to published ASNC reporting guidelines. The selected statements can be edited with free text additions or deletions to meet all physicians' preferences.

Other benefits to Cardiostream include instant e.fax and email with web based storage capability and automatic data archival. Historical data review and retrieval is available for at the push of a button.

CARDIOSTREAM KEY BENEFITS

INSTANT ACCESS

- > Quality data access
- > Quality image access





ENHANCED EFFICIENCY

- > Eliminate wasted time
- > Eliminate transcription cost
- > Avoid Express mail services and wasted time burning CD's/DVD's

TOTAL CONTROL

- > Point and click report generator
- > Accredited reports
- > Online access to all data, anytime, from anywhere

THE CARDIOSTREAM 4-STEP WORKFLOW

<p>1 ACQUISITION</p> 	<p>Acquire all clinical information, including cardiac images, static and dynamic clips, plus demographic and stress info.</p>
<p>2 TRANSMISSION</p> 	<p>On the same day, Images/ data are encoded, encrypted, and transmitted via secure internet access to DIS's Data Center.</p>
<p>3 STORAGE</p> 	<p>Images and data are received and securely archived.</p>
<p>4 ACCESS</p> 	<p>Clients have anywhere, anytime access to appropriate clinical data from any web-enabled computer, [or email / efax] locally [office] or remotely.</p>